

# Welcome to Frederick Gent School



## A Year 7 guide

## Welcome

This booklet is to help you to settle into Year 7 a little easier. It will explain some things that you may be unsure of.

## Who's who



**Mr C Woollard (Headteacher)**



**Mr M Bradshaw**  
(Deputy Headteacher)



**Mrs R Skelton**  
(Deputy Headteacher)



**Mrs S Gascoigne**  
(Assistant Headteacher)



**Miss Z Chambers**  
(Assistant Headteacher)

## Year 7

### Achievement Leader



**Mr A Gray**

### Achievement Leader Support Assistant



**Miss K Brass**

Miss Brass will be available to support you throughout the school day.  
Their office is facing the restaurant next to the Humanities department.

If you have any worries, feel poorly or are upset:

**At tutor time** – see your tutor;

**Any other time** – see your achievement leader support assistant.

Please do not ring your parents/carers within school hours!

Year 7 Tutor groups

7F – Ms D Fox

7R – Ms A Scruton

7E – Ms A Owens

7G – Miss A Trowsdale

7N – Mr A Amraoui

7T – Ms D Smith

## Dinner Hall

The Dining Hall is open for breakfast from 7:45am.

You can order a 'grab and go' meal each morning and collect it at lunch time.

Snacks are available at break time and there is a full menu served at lunch. Alternatively, you can bring in a packed lunch.

For school meals, you pay by putting money on a 'cashless' system. Parents/carers can pay online, or you can top up your credit at the machines in the Dining hall with cash.



The M.U.G.A is open at lunchtimes  
just for Year 7 students!

## Equipment

We recommend that you bring the following to school every day:

- Bag – this needs to be big enough to carry all your books and equipment.
- Pens/pencils
- Ruler
- Calculator
- Compass and protractor



You will also need your P.E kit on the days you have P.E!

## School uniform

<b>Blazer</b>	Black	With school logo (compulsory).
<b>Skirt</b>	Plain White	Traditional shirt collar (short or long sleeved).
<b>Jumper/cardigan</b>	Black	V-neck with school logo (optional).
<b>Tie</b>	Clip-on school tie (make sure you get the correct year!)	Compulsory.
<b>Skirt</b>	Black	Tailored, knee-length.
<b>Trousers</b>	Black	Tailored.
<b>Belt</b>	Black	Optional.
<b>Socks</b>	Black	
<b>Tights</b>	Black/flesh coloured	Not patterned.
<b>Footwear</b>	Black	Shoes only, no black trainers.

Uniform can be bought from Mitchell Sports in South Normanton.

Tie should be the specific Year 7 one.

<b>Jewellery</b>	The only jewellery permitted is one small pair of stud earrings, one small ring and a watch. Facial piercings are NOT allowed
<b>Make up/nails</b>	Make up should be subtle and nails should be natural. Flase lashes and nails are not allowed
<b>Hair colour</b>	'Natural' hair colours only.

## A Typical Week at Frederick Gent School

### A School Day:

Arrived at School	8.25am
Registration	8.30am
Period 1	8.45am
Period 2	9.45 am
Break	10.45am
Period 3	11.05am
Period 4	12.05pm
Lunch	1.05pm
Period 5	1.50pm
End of Last period	2.50pm

### Y7 Lessons per Week:

Maths	4
English / Drama / Library	5
Science	4
Humanities	3
Languages	3
Design / Art / Music	3
PE	2
ICT	1
Total	25

### Typical Registration activities Rota for Year 7:

Monday	Notices/ Quiet Reading
Tuesday	British Values
Wednesday	Literacy
Thursday	Numeracy
Friday	Assembly



## P.E kit

P.E top	Maroon with vertical black trim and school logo
Shorts	Plain black
Socks	Plain black
Trainers	
Gum shield	Compulsory for hockey and rugby
Shin pads	Should be worn for football, hockey and rugby.

Optional Frederick Gent School hooded tops and long sleeved tops are available at Mitchell Sports.

---

## Sports clubs

Football

Rugby

Dance

Trampolines

Netball

Plus many more!

## Library

Mrs Jackson is our school librarian. The library is open from 8:00am most days.

Lots of books

Competitions

Accelerated  
reading

Homework

Careers

Do a quiz



## Show My Homework



You will be given login details for the Show My Homework app on your first day. You can download an app for your phone or use it via the internet or your web browser. This is where you will find your homework set and other reminders. Your parents will be able to see your tasks and messages too!

## Literacy and Accelerated Reader

As students moves through secondary education, they will need to read an increasing amount and variety of texts for all subjects. This means we need to support their progress in reading as much as possible. Research has established beyond doubt that regular readers are better spellers, have better grammatical skills, have a wider vocabulary and are likely to achieve a whole grade higher across *all* subjects at GCSE, than students who do not read regularly.

In order to make the required progress for success, students will have a Literacy lesson once a week, participating in the Accelerated Reader programme, a programme to boost reading competence. This involves them reading various texts and taking quizzes to assess comprehension and reading skills. Progress is closely monitored to give students the best possible chance of success in GCSE examinations. They will take four reading age tests per year, and parents will be kept informed of students most recent reading age by letter and online through "Home Contact", which is part of the Accelerated Reader programme.



To be able to access GCSE papers, students needs to have a reading age of 14. As a school, we aim to have all students GCSE-ready by the end of year 8. To ensure we are successful in this task, students need to read at home every day for at least 20 minutes. **We recommend students read for 20 minutes, five time a week**, as well as having their reading book on them at all times in school. Daily reading will be part of homework and we expect students to complete this homework task every week.

## SEND Department

### Teaching Assistants

You may have a teaching assistant in some of your lessons. If you need help with something, they are there to answer any questions you may have and support you along with the teacher. We can also read information/test questions, help with your writing, and support you to you on task.

Teaching assistants can be found in Learning Support (LS), this is where we spend break and lunch times so if you feel you need somewhere quiet to have a little rest or calm down, this can be done here. Sometimes you may get taken to Learning Support during lessons to complete tests or use it as a quiet place to work.

Teaching Assistants support with interventions during registration. This may be IDL or LEXIA on the computers in the library or in LS, handwriting, Toe-by-Toe or reading. Some tutor groups may have a TA with them in registration.

We run a lunch club at lunch time where you can get help with schoolwork or play games and make friends. We also run a Homework club after school in the library. You can use the computers to help you with your homework and ask for support if you need it.

We are all very friendly



## Let's Meet the SEND Team



Mrs Steel is our Special Educational Needs and Disabilities Coordinator. There are also lots of other staff that are here to support you:



Miss Beach



Mr Comins



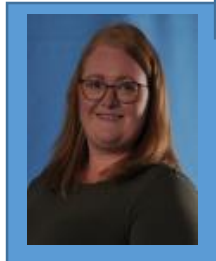
Mrs Lickley



Mrs Mee



Mrs Middup



Ms Riley



Ms Salmon



Mrs Skidmore



Mrs Smith



Ms Worrall

## Lunch Club

Lunch Club is on every day, giving students a chance to catch up with any homework and have a quiet place to sit and relax. Lunch Club is run by Teaching Assistants and prefects.

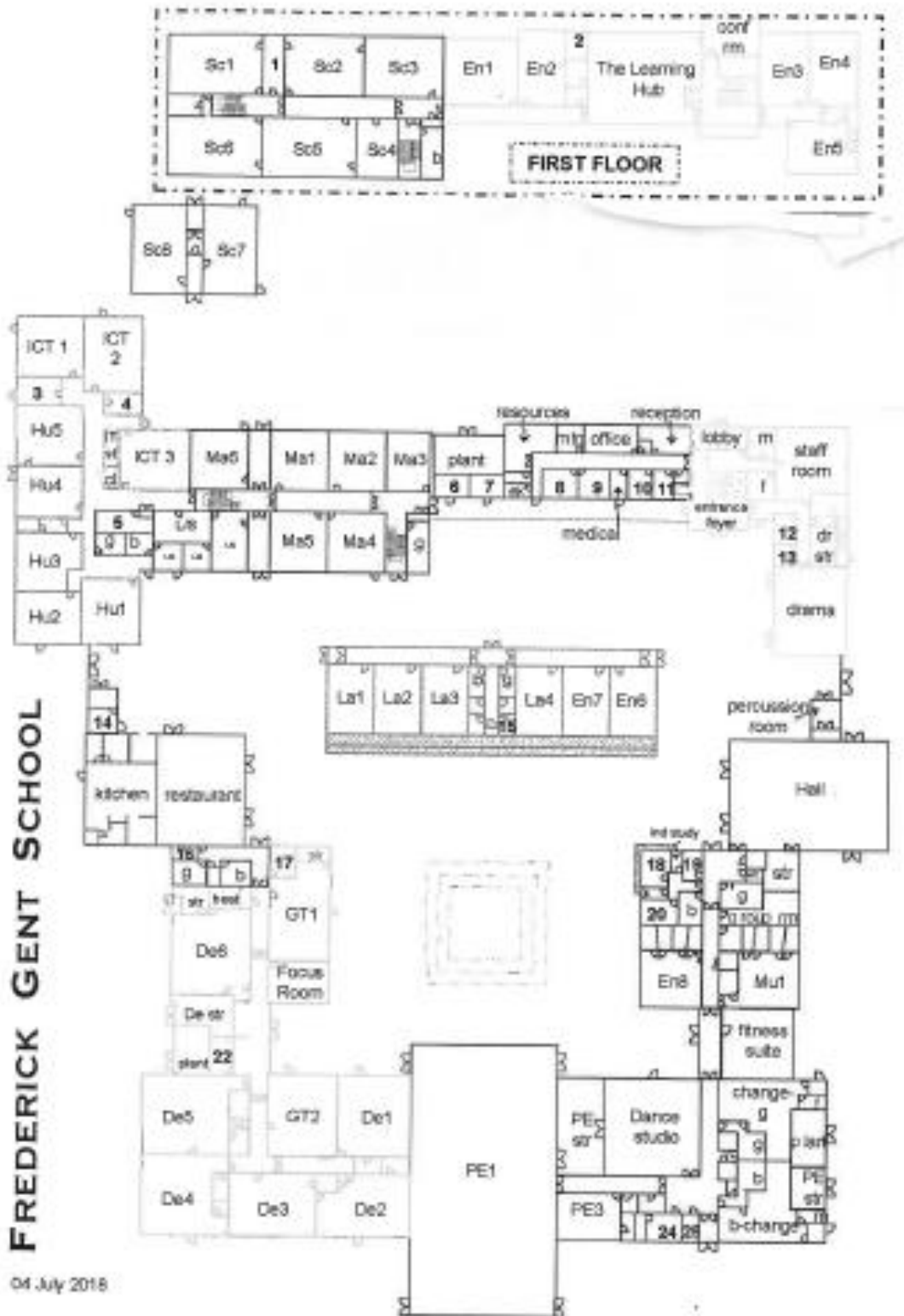
## Careers Information

At Frederick Gent School we believe that we offer a robust and broad careers programme for all of our pupils. Our pupils are able to access relevant and up to date career information from a variety of sources.

Pupils also have access to their own online career plan through Unifrog, this enables pupils to develop their plans for the future through a series of online tools and activities. All pupils have the opportunity to be involved in career assemblies, National Careers and Apprenticeship weeks, visits to colleges, Universities, experiences of the workplace, opportunities to have access to employer's through Mock interviews and guest speakers in school . Pupils also have access to high quality careers guidance through our careers Adviser, Jemma Barrett. Should you wish to discuss any aspect of the school careers programme please contact Mrs Jenkinson via the school website.



# MAP OF SCHOOL



**FREDERICK GENT SCHOOL**

04 July 2018